

# Butter Cross Monument

PROGRESS REPORT No: 02



Photo showing core drilling rig to enable precise and careful removal of the ferrous fixings



*Principal & Specialist Contractors in Restoration, Conservation & New Build Masonry*

E: [info@stonewest.co.uk](mailto:info@stonewest.co.uk) T: 020 8684 6646 F: 020 8684 9323 W: [www.stonewest.co.uk](http://www.stonewest.co.uk)

Stonewest Ltd, 30-40 New Bridge Street, London, EC4V 6BJ

# Butter Cross Monument

PROGRESS REPORT No: 02



Photo showing cracking to the stone caused by excessive slate dowels located too close the outside of the stone, also the various different materials used for fixings- slate, stainless steel and brass



*Principal & Specialist Contractors in Restoration, Conservation & New Build Masonry*

E: [info@stonewest.co.uk](mailto:info@stonewest.co.uk) T: 020 8684 6646 F: 020 8684 9323 W: [www.stonewest.co.uk](http://www.stonewest.co.uk)

Stonewest Ltd, 30-40 New Bridge Street, London, EC4V 6BJ

# Butter Cross Monument

PROGRESS REPORT No: 02



Photo showing the 40mm copper pipe used for fixing and the cementitious mortar in the bed joint. The hollow copper pipe was found to have two 8mm stainless steel bars within set in a cementitious type slurry



*Principal & Specialist Contractors in Restoration, Conservation & New Build Masonry*

E: [info@stonewest.co.uk](mailto:info@stonewest.co.uk) T: 020 8684 6646 F: 020 8684 9323 W: [www.stonewest.co.uk](http://www.stonewest.co.uk)

Stonewest Ltd, 30-40 New Bridge Street, London, EC4V 6BJ

# Butter Cross Monument

PROGRESS REPORT No: 02



Photo showing the extensive vertical cracking to stone no N14a. Caused by the ferrous 40mm ferrous dowel used as the central fixing. We also consider when molten lead was poured to fill the void thermal shock may be a contributory factor to start the stone failure



*Principal & Specialist Contractors in Restoration, Conservation & New Build Masonry*

E: [info@stonewest.co.uk](mailto:info@stonewest.co.uk) T: 020 8684 6646 F: 020 8684 9323 W: [www.stonewest.co.uk](http://www.stonewest.co.uk)

Stonewest Ltd, 30-40 New Bridge Street, London, EC4V 6BJ

# Butter Cross Monument

PROGRESS REPORT No: 02



Photo showing SWL mason hand sawing bed joints using a traditional tungsten tipped masonry saw



*Principal & Specialist Contractors in Restoration, Conservation & New Build Masonry*

E: [info@stonewest.co.uk](mailto:info@stonewest.co.uk) T: 020 8684 6646 F: 020 8684 9323 W: [www.stonewest.co.uk](http://www.stonewest.co.uk)

Stonewest Ltd, 30-40 New Bridge Street, London, EC4V 6BJ

# Butter Cross Monument

PROGRESS REPORT No: 02



Photo shows SWL masons carefully and safely lifting stone no N14a off of its bed joint



*Principal & Specialist Contractors in Restoration, Conservation & New Build Masonry*

E: [info@stonewest.co.uk](mailto:info@stonewest.co.uk) T: 020 8684 6646 F: 020 8684 9323 W: [www.stonewest.co.uk](http://www.stonewest.co.uk)

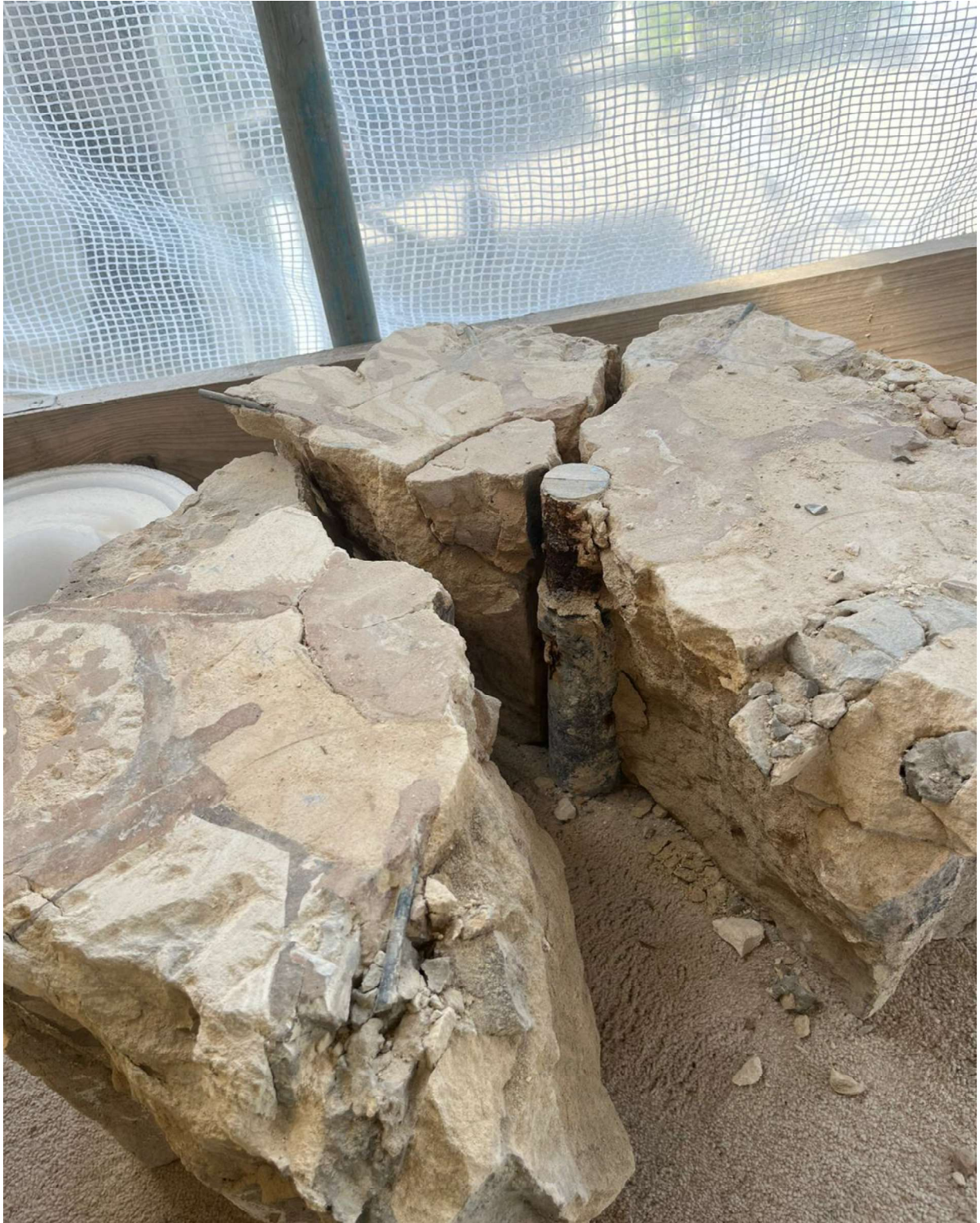
Stonewest Ltd, 30-40 New Bridge Street, London, EC4V 6BJ

# Butter Cross Monument

PROGRESS REPORT No: 02



Photo showing the 40mm ferrous dowel (stone no N14a) . This also had a layer of poured lead infilling the hole that would have been drilled



*Principal & Specialist Contractors in Restoration, Conservation & New Build Masonry*

E: [info@stonewest.co.uk](mailto:info@stonewest.co.uk) T: 020 8684 6646 F: 020 8684 9323 W: [www.stonewest.co.uk](http://www.stonewest.co.uk)

Stonewest Ltd, 30-40 New Bridge Street, London, EC4V 6BJ

# Butter Cross Monument

PROGRESS REPORT No: 02



Photo showing the bed joint between stone no N14a and N14b.  
Poured molten lead was employed to act as an additional fixing into the joggle joints



*Principal & Specialist Contractors in Restoration, Conservation & New Build Masonry*

E: [info@stonewest.co.uk](mailto:info@stonewest.co.uk) T: 020 8684 6646 F: 020 8684 9323 W: [www.stonewest.co.uk](http://www.stonewest.co.uk)

Stonewest Ltd, 30-40 New Bridge Street, London, EC4V 6BJ

# Butter Cross Monument

PROGRESS REPORT No: 02



Photo showing the crack running North to South through stone no N17b, hooded stone above the large statues



*Principal & Specialist Contractors in Restoration, Conservation & New Build Masonry*

E: [info@stonewest.co.uk](mailto:info@stonewest.co.uk) T: 020 8684 6646 F: 020 8684 9323 W: [www.stonewest.co.uk](http://www.stonewest.co.uk)

Stonewest Ltd, 30-40 New Bridge Street, London, EC4V 6BJ

# Butter Cross Monument

PROGRESS REPORT No: 02



Laser cleaning trials carried out 30/04/26



*Principal & Specialist Contractors in Restoration, Conservation & New Build Masonry*

E: [info@stonewest.co.uk](mailto:info@stonewest.co.uk) T: 020 8684 6646 F: 020 8684 9323 W: [www.stonewest.co.uk](http://www.stonewest.co.uk)

Stonewest Ltd, 30-40 New Bridge Street, London, EC4V 6BJ

# Butter Cross Monument

PROGRESS REPORT No: 02



Stone number N9 before laser cleaning trials had taken place



*Principal & Specialist Contractors in Restoration, Conservation & New Build Masonry*

E: [info@stonewest.co.uk](mailto:info@stonewest.co.uk) T: 020 8684 6646 F: 020 8684 9323 W: [www.stonewest.co.uk](http://www.stonewest.co.uk)

Stonewest Ltd, 30-40 New Bridge Street, London, EC4V 6BJ

# Butter Cross Monument

PROGRESS REPORT No: 02



Stone number N9 after laser cleaning trials had taken place.  
A separate laser cleaning report has been prepared and submitted



*Principal & Specialist Contractors in Restoration, Conservation & New Build Masonry*

E: [info@stonewest.co.uk](mailto:info@stonewest.co.uk) T: 020 8684 6646 F: 020 8684 9323 W: [www.stonewest.co.uk](http://www.stonewest.co.uk)

Stonewest Ltd, 30-40 New Bridge Street, London, EC4V 6BJ

# Butter Cross Monument

PROGRESS REPORT No: 02



Photo showing the various different fixings found during the dismantle.  
Non ferrous metal was used for the 1990's rebuilding. Unfortunately ferrous metal embedment's were left within the structure which has caused ongoing issues further down into the heart of the structure



*Principal & Specialist Contractors in Restoration, Conservation & New Build Masonry*

E: [info@stonewest.co.uk](mailto:info@stonewest.co.uk) T: 020 8684 6646 F: 020 8684 9323 W: [www.stonewest.co.uk](http://www.stonewest.co.uk)

Stonewest Ltd, 30-40 New Bridge Street, London, EC4V 6BJ